

KRS2-100

Kontroll-Nr. --

2013-10-18 V.15 / 1.10.2012

KRS2-100			
Item	Item no.	Description	Quant.
1	001-TEG-09	Cable Set (20m) H07RN-F4Cx2,5mm2 without stuffing box	1
1	M01-TEG-09	Cable Set (20m) NSSHÖU 4Cx2,5mm2	1
2	070-107-18	Cable Clamp FC	1
3	140-035-14	Hex.Bolt M6x20 SUS304 (EN X5CrNi18-10) Stainless Steel	2
4	006-126-14	Stuffing Box No.2 FC	1
5	140-055-10	Hex.Bolt M8x25 SUS304 (EN X5CrNi18-10) Stainless Steel	4
6	008-139-16	Mould Cover KR2-4 CR	1
7	141-004-17	Hex. Nut M6 SUS304 (EN X5CrNi18-10) Stainless Steel	1
8	010-120-18	Cable Clip No.2-1 SPC	1
9	010-122-10	Cable Clip Rubber No.2 NBR	1
10	011-110-11	Shackle 6mm SS	1
11	140-101-12	Hex.Bolt M12x50 SUS304 (EN X5CrNi18-10) Stainless Steel	4
12	142-165-10	Spring Washer M12 SUS304 (EN X5CrNi18-10)	4
13	095-131-18	Chain d4(3-Link) SS	1
14	070-103-10	Cable Clamper (SS)	1
15	140-032-11	Hex.Bolt M6x15 SUS304 (EN X5CrNi18-10) Stainless Steel	1
16	009-123-10	Terminal P-5.5 CU	6
17	002-129-15	Heat Shrink Tube (Sold per meter) EVA(d14x1t) (Vm)	1
18	002-132-11	Heat Shrink Tube (Sold per meter) A4(d17x0.3t) (Vm)	1
19	009-101-12	Terminal (C/W Screw) d12x(d6.6xd6.6)x25l BSBM	3
20	143-805-34	Pan Screw (w/spring washer /plain washer) M4x6 (SWRM)	1
21	009-130-10	Terminal R-5.5-4 CU	1
22	140-000-01	Hex.Bolt M10x30(B=14) SUS304 (EN X5CrNi18-10) Stainless Steel	4
23	041-105-16	Flange KRS-6x4 FC	1
24	142-165-10	Spring Washer M12 SUS304 (EN X5CrNi18-10)	1
25	050-364-13	Motor Bracket FC	1
26	122-250-11	O-Ring 230xd3.8 NBR	1
27	142-198-12	Wave Washer #6306 SK-5	1
28	052-109-14	Bearing 6306ZZC3	1
29	058-120-19	Lead Wire Protection Plate d94xd220x1.6t Resin	1
30	055-563-19	Rotor	1
31	147-021-18	Impeller Key 8x8x44l Stainless Steel	1
32	140-000-01	Hex.Bolt M10x30(B=14) SUS304 (EN X5CrNi18-10) Stainless Steel	5
33	032-126-28	Hose Coupling 100mm(C4/A4) FC	1
33	032-438-13	Hose Coupling (for EUR)KTV(BSPT-4) FC	1
34	121-141-15	Packing KRB-3/4 Type NR	1
35	122-285-15	O-Ring 155xd3.1 NBR	1
36	140-100-11	Hex.Bolt M12x45 SUS304 (EN X5CrNi18-10) Stainless Steel	1
37	068-159-18	Handle KRS-C6/A6/8S(T) SGP+SPC	1
38	053-241-12	Motor Protector 380/400/415V-50HZ KA313-GGXL110 (H.C)	1
39	142-124-20	Plain Washer M4 SPC	2
40	142-160-31	Spring Washer M4 SWRH	2
41	143-016-18	Pan Screw M4x12 SWRM	2
42	056-001-95	Stator 400/415V-50Hz	1
43	121-304-18	Packing (Water Way, Upp.) KRS-7.5/11(T) NBR	1
44	140-100-11	Hex.Bolt M12x45 SUS304 (EN X5CrNi18-10) Stainless Steel	4
45	122-311-11	O-Ring 220xd3.5 NBR	1
46	140-029-28	Hex.Bolt M6x10 SWRM	3
47	062-102-18	Bearing Cover KRS2-C6 (SPC)	1
48	052-112-10	Bearing 6309ZZC3	1
49	146-027-11	Retaining Ring C45 SK-5	1
50	122-140-17	O-Ring G-145 NBR	1
51	060-221-18	Bearing Housing FC	1
52, 53	143-070-23	Pan Screw M5x6 SWRM	2
52, 53	030-156-18	Oil Lifter For H-35(A)(T) Resin	1
52, 53	143-070-10	Pan Screw M5x6 SWRM	3
52, 53	030-150-12	Seal Stopper For H-35(A)(T) SPCC	1
54	020-380-12	Pump Casing FC	1
55	026-123-13	Oil Seal TC-406211 NBR	1
56	071-128-47	Shaft Sleeve KRS-7.5/11KW SUS403 (EN X6Cr13) Stainless Steel	1
57	040-110-24	Impeller Shim d32.5xd58x0.3t SUS304 (EN X5CrNi18-10) Stainless Steel	1
58	021-572-16	Impeller 50Hz KRS2-100/60Hz KRS2-150 HiCrFC	1
59	064-451-11	Motor Frame FC	1
60	121-247-12	Packing d12.3xd18x2t PE	1
61	035-113-18	Air Tightness Test Plug M12x14 SUS304 (EN X5CrNi18-10) Stainless Steel	1
62	121-129-17	Packing (Water Way, Low.) KRS-7.5/11 NBR	1
63	140-054-48	Hex.Bolt M8x20 SWRM	4
64	025-195-13	Mechanical Seal H-35 SiC	1
65	142-165-10	Spring Washer M12 SUS304 (EN X5CrNi18-10)	1
66	140-113-17	Hex.Bolt M12x120 SUS304 (EN X5CrNi18-10) Stainless Steel	1
67	024-126-23	Connection Rod KRS-100 FCMB	1
68	024-120-14	Stirrer GPN-80 HiCrFC	1
69	140-139-19	Hex.Bolt M16x143(B=19.) SUS304 (EN X5CrNi18-10) Stainless Steel	1
70	120-112-14	Packing d260xd314x0.5t PE	1
71	140-057-41	Hex.Bolt M8x35(B=14) SWRM	3
72	142-210-11	Plain Washer d8.6xd13.4x1t SUS304 (EN X5CrNi18-10) Stainless Steel	3
73	141-005-18	Hex.Nut M8 SUS304	3
74	142-129-25	Plain Washer M12 SPC	3
75	144-478-15	Stud Bolt M12x111(21/25) SUS403 (EN X6Cr13) Stainless Steel	3
76	142-165-10	Spring Washer M12 SUS304 (EN X5CrNi18-10)	3
77	141-007-10	Hex.Nut M12 SUS304 (EN X5CrNi18-10)	3
78	142-130-16	Plain Washer M16 SUS304 (EN X5CrNi18-10) Stainless Steel	1

KRS2-100

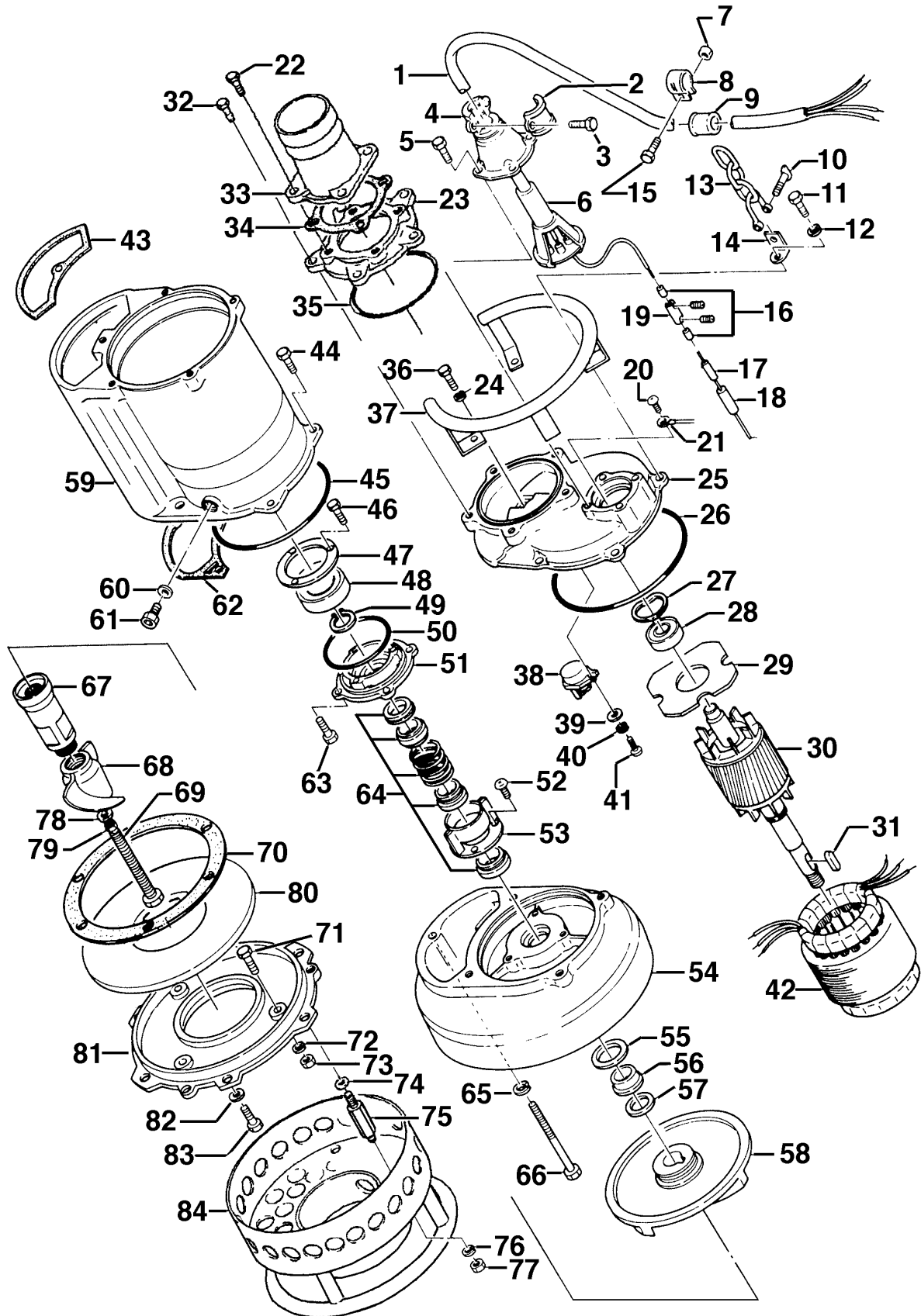
Kontroll-Nr. --

2013-10-18 V.15 / 1.10.2012

KRS2-100

Item	Item no.	Description	Quant.
79	141-008-40	Hex.Nut M16(=10) SUS304 (EN X5CrNi18-10) Stainless Steel	1
80	033-110-19	Wear Plate 60Hz HiCrFC	1
81	022-420-24	Suction Cover FC	1
82	142-129-25	Plain Washer M12 SPC	3
83	140-097-14	Hex.Bolt M12x30 SUS304 (EN X5CrNi18-10)	3
84	023-241-19	Strainer Stand SPC+SGP	1
	173-439-14	Packing & O-Ring Set	1
	##oilVG32	ml Turbine Oil ISO VG32	2300

Exploded View KRS2-100



KRS2-100