

KRS2-150

Kontroll-Nr. --

2013-10-18 V.15 / 1.10.2012

KRS2-150			
Item	Item no.	Description	Quant.
1	001-TEG-11	Cabletyre Cable Set (20m) H07RN-F4Cx4mm2 without stuffing box	1
1	M01-TEG-11	Cabletyre Cable Set (20m) NSSHÖU 4Cx4mm2	1
2	070-107-18	Cable Clamp FC	1
3	140-035-14	Hex.Bolt M6x20 SUS304 (EN X5CrNi18-10) Stainless Steel	2
4	006-127-15	Stuffing Box No.3 FC	1
5	140-055-10	Hex.Bolt M8x25 SUS304 (EN X5CrNi18-10) Stainless Steel	4
6	008-150-13	Mould Cover KR3-12 CR	1
7	141-004-17	Hex. Nut M6 SUS304 (EN X5CrNi18-10) Stainless Steel	1
8	010-120-18	Cable Clip No.2-1 SPC	1
9	010-122-10	Cable Clip Rubber No.2 NBR	1
10	011-110-11	Shackle 6mm SS	1
11	140-104-15	Hex.Bolt M12x65 SUS304 (EN X5CrNi18-10) Stainless Steel	4
12	142-165-10	Spring Washer M12 SUS304 (EN X5CrNi18-10)	4
13	095-131-18	Chain d4(3-Link) SS	1
14	070-103-10	Cable Clamper (SS)	1
15	140-032-11	Hex.Bolt M6x15 SUS304 (EN X5CrNi18-10) Stainless Steel	1
16	009-123-10	Terminal P-5.5 CU	6
17	002-129-15	Heat Shrink Tube (Sold per meter) EVA(d14x1t) (Vm)	1
18	002-132-11	Heat Shrink Tube (Sold per meter) A4(d17x0.3t) (Vm)	1
19	009-101-12	Terminal (C/W Screw) d12x(d6.6xd6.6)x25l BSBM	3
20	143-041-12	Pan Screw M6x8 SWRM	1
21	142-162-33	Spring Washer M6 SWRH	1
22	009-131-11	Terminal R-5.5-6 CU	1
23	032-137-19	Hose Coupling 150mm(GHV-7.5/11KW) FC	1
23	032-000-27	Hose Coupling (for EUR)KTZ(BSPT-6) FC	1
24	122-285-15	O-Ring 155xd3.1 NBR	1
25	050-365-14	Motor Bracket FC	1
26	122-250-11	O-Ring 230xd3.8 NBR	1
27	142-199-13	Wave Washer #6208/6307 SK-5	1
28	052-110-18	Bearing 6307ZZC3	1
29	058-147-12	Lead Wire Protection Plate d100xd204x1.6t Resin	1
30	055-564-10	Rotor	1
31	147-021-18	Impeller Key 8x8x44l Stainless Steel	1
32	140-000-01	Hex.Bolt M10x30(B=14) SUS304 (EN X5CrNi18-10) Stainless Steel	5
33	140-100-11	Hex.Bolt M12x45 SUS304 (EN X5CrNi18-10) Stainless Steel	1
34	142-165-10	Spring Washer M12 SUS304 (EN X5CrNi18-10)	1
35	068-160-12	Handle KRS-D6/B6(T) SGP+SPC	1
36	053-398-15	Motor Protector 380V-50HZ KA314-HLYL00 (B.C)	1
37	142-124-20	Plain Washer M4 SPC	2
38	142-160-31	Spring Washer M4 SWRH	2
39	143-017-19	Pan Screw M4x14 SWRM	2
40	056-001-96	Stator 400V-50Hz	1
41	121-304-18	Packing (Water Way, Upp.) KRS-7.5/11(T) NBR	1
42	140-100-11	Hex.Bolt M12x45 SUS304 (EN X5CrNi18-10) Stainless Steel	4
43	122-311-11	O-Ring 220xd3.5 NBR	1
44	140-029-28	Hex.Bolt M6x10 SWRM	3
45	062-158-19	Bearing Fixing Plate d95xd144x4.5t SPCC	1
46	052-113-11	Bearing 6310ZZC3	1
47	146-029-13	Retaining Ring C50 SK-5	1
48	122-140-17	O-Ring G-145 NBR	1
49	060-222-19	Bearing Housing FC	1
50, 51	143-070-23	Pan Screw M5x6 SWRM	2
50, 51	030-156-18	Oil Lifter For H-35(A)(T) Resin	1
50, 51	143-070-10	Pan Screw M5x6 SWRM	3
50, 51	030-150-12	Seal Stopper For H-35(A)(T) SPCC	1
52	020-382-14	Pump Casing 50Hz FC	1
53	026-123-13	Oil Seal TC-406211 NBR	1
54	071-128-47	Shaft Sleeve KRS-7.5/11KW SUS403 (EN X6Cr13) Stainless Steel	1
55	040-110-24	Impeller Shim d32.5xd58x0.3t SUS304 (EN X5CrNi18-10) Stainless Steel	1
56	021-675-10	Impeller (50HZ) 50Hz HiCrFC	1
57	064-450-10	Motor Frame FC	1
58	121-247-12	Packing d12.3xd18x2t PE	1
59	035-113-18	Air Tightness Test Plug M12x14 SUS304 (EN X5CrNi18-10) Stainless Steel	1
60	121-129-17	Packing (Water Way, Low.) KRS-7.5/11 NBR	1
61	061-142-17	Bearing Collar d50xd70x3t SPC	1
62	140-054-48	Hex.Bolt M8x20 SWRM	4
63	025-195-13	Mechanical Seal H-35 SiC	1
64	142-165-10	Spring Washer M12 SUS304 (EN X5CrNi18-10)	1
65	140-113-17	Hex.Bolt M12x120 SUS304 (EN X5CrNi18-10) Stainless Steel	1
66	024-126-23	Connection Rod KRS-100 FCMB	1
67	024-120-14	Stirrer GPN-80 HiCrFC	1
68	140-139-19	Hex.Bolt M16x143(B=19.) SUS304 (EN X5CrNi18-10) Stainless Steel	1
69	120-105-14	Packing d291xd348x0.5t PE	1
70	033-114-13	Suction Plate 50Hz HiCrFC	1
71	140-057-41	Hex.Bolt M8x35(B=14) SWRM	4
72	142-210-11	Plain Washer d8.6xd13.4x1t SUS304 (EN X5CrNi18-10) Stainless Steel	4
73	141-005-18	Hex.Nut M8 SUS304	4
74	142-129-25	Plain Washer M12 SPC	3
75	144-478-15	Stud Bolt M12x11(21/25) SUS403 (EN X6Cr13) Stainless Steel	3
76	142-165-10	Spring Washer M12 SUS304 (EN X5CrNi18-10)	3
77	141-007-10	Hex.Nut M12 SUS304 (EN X5CrNi18-10)	3
78	142-130-16	Plain Washer M16 SUS304 (EN X5CrNi18-10) Stainless Steel	1

KRS2-150

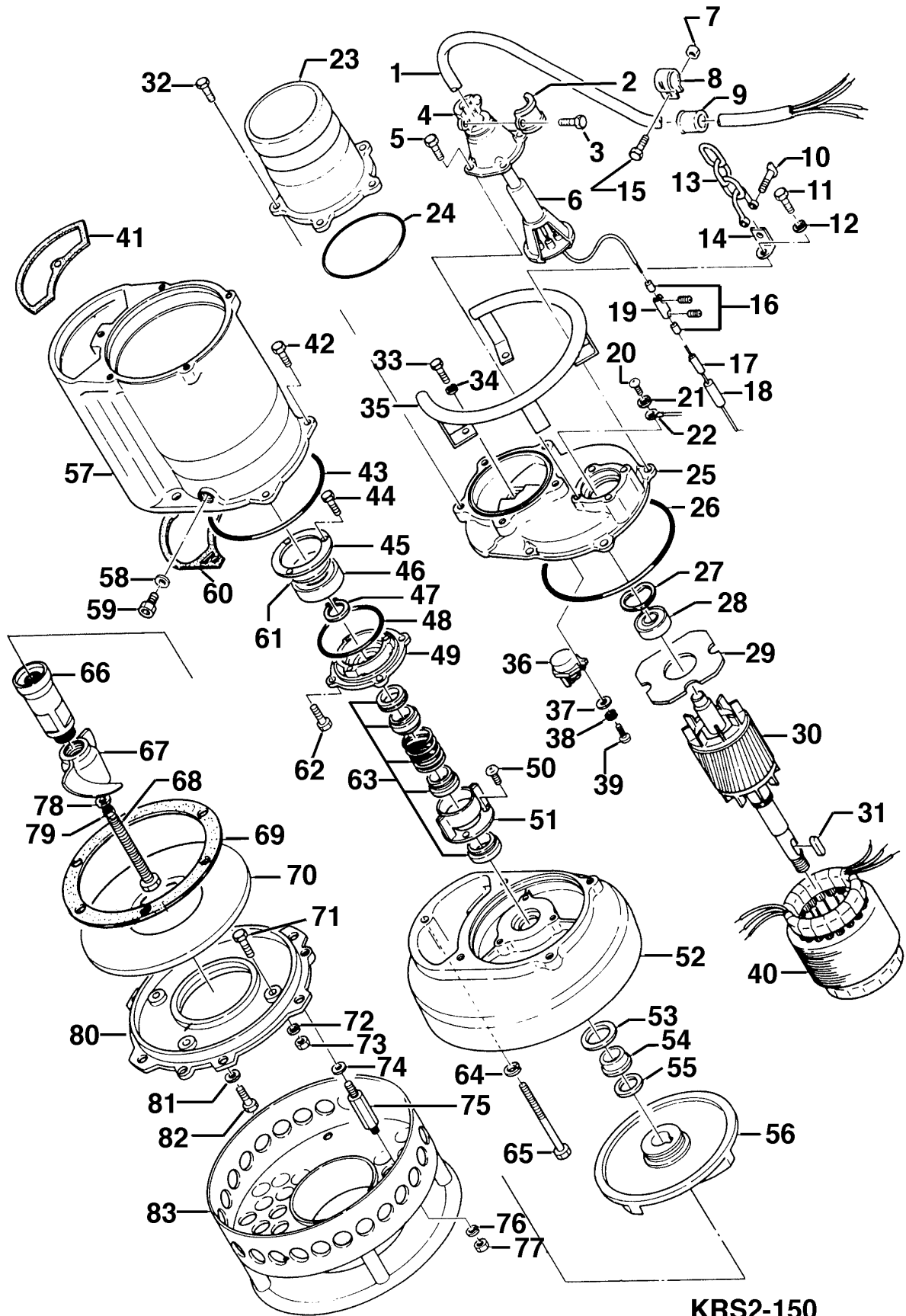
Kontroll-Nr. --

2013-10-18 V.15 / 1.10.2012

KRS2-150

Item	Item no.	Description	Quant.
79	141-008-40	Hex.Nut M16(=10) SUS304 (EN X5CrNi18-10) Stainless Steel	1
80	022-467-23	Suction Cover 50Hz FC	1
81	142-129-25	Plain Washer M12 SPC	3
82	140-097-14	Hex.Bolt M12x30 SUS304 (EN X5CrNi18-10)	3
83	023-253-14	Strainer Stand 50Hz SPC+SGP	1
	173-436-11	Packing & O-Ring Set	1
	##oilVG32	ml Turbine Oil ISO VG32	2300

Exploded View KRS2-150



KRS2-150